

Tigress The Import/Export System

The Import/Export System (TIES or 'standard' TIES) is a user-configurable graphical application that acts as both a data transfer and file conversion hub. TIES reads data from a database, a file, a digitiser or a tape, re-formats the data if necessary, then directs the data to the specified destination, which may be a database, a file, a printer or a tape. Data can be transferred, for example, from file to database, database to database, database to file and from file to file.

TIES supports a wide variety of industry standard data formats for import and export of data to and from the PDS, for file to file conversion, and has also been specifically tailored to provide import and export capability for company internal database file formats. Import and export of data in currently unsupported formats is achieved using Fortran, C, or AWK format conversion programs. These programs can be written by PGS Tigress or by any external company and are easily added to TIES, thus providing loose link capability to and from the PDS for any file format.

TIES imports and exports all the major data types stored in the PDS, including:

- Well header
- Log traces
- Core traces
- Deviation surveys
- RFT
- Zonations
- Audit
- Production
- Checkshot surveys
- Mechanical well data
- Hydraulic
- Mapping grids
- Seismic faults
- Seismic horizons
- Seismic Wavelets

Multiple data types for multiple wells can be imported and exported in one operation, either immediately or in batch. The number of wells and data types that can be imported and exported is controlled by the source and destination data formats. Before data export from the PDS, the well data range can be constrained by depth or by zone interval. This can be set globally for all wells, or on a well-by-well basis. Data can also be exported in metric or imperial units.

The data formats currently supported by TIES for each source and destination media are shown in the next diagram.



Tigress The Import/Export System

Source

Database:

- PDS
- OpenWorks
- GeoFrame
- OpenSpirit

File:

- EarthVision
- Z-Map
- CPS3
- Geoshare
- PBAscii
- Production Analyst
- LAS
- Geolog 6
- EPCD
- Epics
- Epproms
- Geode
- Geologix
- Geosecs
- Logic
- Pagoda
- PTF
- Parasol

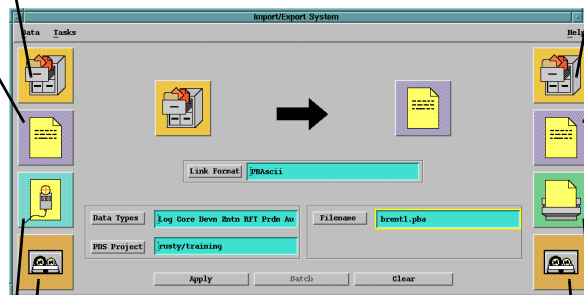
Digitiser:

Automatically starts the Log Digitising application

Tape:

Automatically starts the relevant application for loading:

- LIS
- BIT
- TIF
- SEGY



Destination

Database:

- PDS
- OpenWorks
- OpenSpirit
- Recall

File:

- EarthVision
- Z-Map
- CPS3
- Geoshare
- PBAscii
- Irap RMS
- Geolog 6
- Geologix
- Spatial
- Epics
- FIST
- FrontEnd
- Geode
- Geosecs
- ISATIS
- Logic
- Pagoda
- PTF

Printer:

- Tigrep report

Tape:

Automatically starts the relevant application for exporting:

- LIS
- SEGY
- UKOOA

Integrated by Design



PGS Tigress (UK) Ltd.
 Anglers Court, 33-44 Spittal Street, Marlow, Buckinghamshire, SL7 1DB
 United Kingdom
 Tel. +44 1628 402400
 E-mail: info@tigress.co.uk
 Web: www.tigress.co.uk



FS40771